

# Termination DIN

50Ω

DC to 2000 MHz

LOUIS-50



## Maximum Ratings

Operating Temperature	-40°C to 85°C
Storage Temperature	-55°C to 100°C

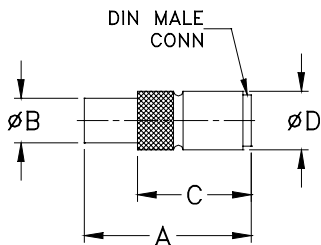
## Features

- wideband coverage, DC to 2000 MHz
- return loss, 33 dB typ. up to 1000 MHz and 27 dB typ. up to 2000 MHz

CASE STYLE: LL987

Connectors	Model	Price	Qty.
DIN Male w/retaining sleeve	LOUIS-50	\$11.95 ea.	(1-9)

## Outline Drawing



## Applications

- cellular communications
- satellite communications
- test set-up

## Electrical Specifications (T<sub>AMB</sub>=25°C)

FREQUENCY (MHz)	IMPEDANCE (OHMS)	RETURN LOSS (dB) MIN.			POWER RATING* (W)
		DC-0.5 GHz	DC-1 GHz	DC-2 GHz	
DC-2000	50	28	28	21	0.125

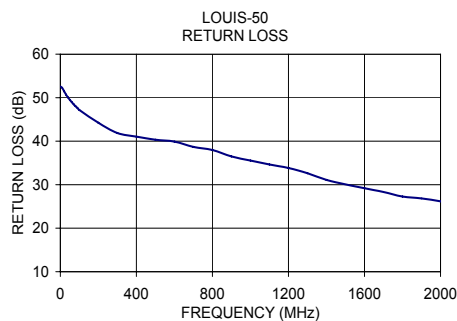
\*Up to 70°C, derate linearly to 80% at 85°C

## Outline Dimensions (inch/mm)

A	B	C	D	wt
0.94	0.25	0.64	0.33	grams
23.88	6.35	16.26	8.38	6.50

## Typical Performance Data

Frequency (MHz)	Return Loss (dB)
1.00	52.55
20.00	51.45
40.00	50.07
70.00	48.50
100.00	47.17
300.00	41.88
500.00	40.34
700.00	38.69
1000.00	35.56
1200.00	33.84
1300.00	32.63
1500.00	30.08
1700.00	28.32
1900.00	26.84
2000.00	26.18



**Mini-Circuits**  
ISO 9001 ISO 14001 AS 9100 CERTIFIED

[minicircuits.com](http://minicircuits.com)

P.O. Box 350166, Brooklyn, New York 11235-0003 (718) 934-4500 Fax (718) 332-4661 For detailed performance specs & shopping online see Mini-Circuits web site



The Design Engineers Search Engine Provides ACTUAL Data Instantly From MINI-CIRCUITS At: [www.minicircuits.com](http://www.minicircuits.com)

IF/RF MICROWAVE COMPONENTS

REV. A  
M104484  
LOUIS-50  
EDU-0283  
URJ/RS/CP  
070305