

High IP3

# Frequency Mixer WIDE BAND

## MCA-35MH+

Level 13 (LO Power+13 dBm) 500 to 3500 MHz



CASE STYLE: DZ883  
PRICE: \$7.95 ea. QTY.(10-49)

### Maximum Ratings

Operating Temperature	-55°C to 100°C
Storage Temperature	-55°C to 100°C
RF Power	200 mW
IF Current	40 mA

### Pin Connections

LO	10
RF	5
IF	3
GROUND	1,2,4,6,7,8,9

### Features

- wide bandwidth, 500 to 3500 MHz
- excellent L-R isolation, 32 dB typ. (1800-2500 MHz)
- good matching 2:1 VSWR typ. (over 1800-2800 MHz)
- small size 0.25"x0.3"x0.2"
- aqueous washable
- triple balanced mixer
- protected by US Patent 6,917,796

### Applications

- cellular
- PCN
- PDC
- DECT
- PHS
- WiMAX

**+ RoHS compliant in accordance with EU Directive (2002/95/EC)**

The +Suffix has been added in order to identify RoHS Compliance. See our web site for RoHS Compliance methodologies and qualifications.

### Electrical Specifications (T<sub>AMB</sub>=-55°C to 100°C)

FREQUENCY (MHz)		CONVERSION LOSS (dB)			LO-RF ISOLATION (dB)		LO-IF ISOLATION (dB)		IP3 at center band (dBm)
LO/RF f <sub>i</sub> -f <sub>o</sub>	IF	$\bar{X}$	$\sigma$	Max.	Typ.	Min.	Typ.	Min.	Typ.
500-3500	10-1500	6.9	0.1	8.7					
500-800	10-300	6.3	0.1	7.7	18	11	29	23	19
800-1000	10-200	6.5	0.1	7.7	24	17	28	20	22
1000-1800	10-800	6.6	0.1	8.7	29	20	28	20	20
1800-2000	10-200	6.3	0.1	7.7*	32	25	29	23	19
1800-2500	10-700	5.8	0.1	7.9	32	22	27	20	19
2000-3500	10-1500	6.5	0.1	8.7	29	17	23	15	19

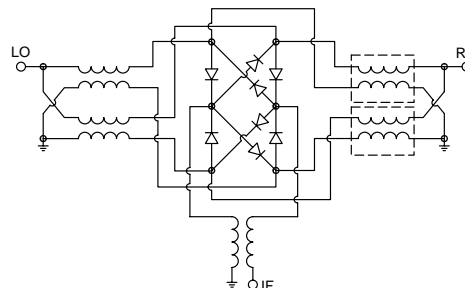
1 dB COMPR. +9 dBm typ.  
\*Conversion loss tested at 30 MHz IF

• see individual band specs

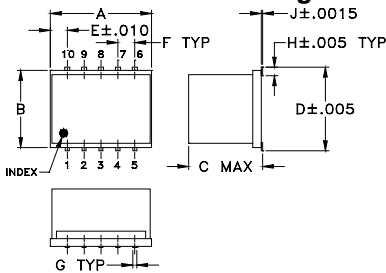
### Typical Performance Data

Frequency (MHz)		Conversion Loss (dB)	Isolation L-R (dB)	Isolation L-I (dB)	VSWR RF Port (:1)	VSWR LO Port (:1)
RF	LO	LO +13dBm	LO +13dBm	LO +13dBm	LO +13dBm	LO +13dBm
460.00	490.00	6.07	14.89	31.56	1.65	1.44
820.00	850.00	6.55	22.74	28.78	2.86	1.11
1000.00	1030.00	6.52	27.75	27.75	3.40	1.27
1400.00	1430.00	6.99	32.26	26.14	2.21	1.75
1800.00	1830.00	6.07	32.12	30.09	1.92	1.57
1992.00	2022.00	5.92	33.68	28.32	1.70	1.54
2097.00	2127.00	5.70	32.52	28.29	1.55	1.38
2202.00	2232.00	5.82	31.97	28.76	1.54	1.34
2395.00	2425.00	6.15	30.82	26.29	1.67	1.35
2500.00	2530.00	5.95	30.44	26.01	1.87	1.37
2600.00	2630.00	6.13	31.78	26.48	2.20	1.30
2700.00	2730.00	6.47	30.50	26.37	2.54	1.28
2800.00	2830.00	6.75	30.68	25.93	2.82	1.34
2900.00	2930.00	6.94	30.99	25.14	3.05	1.49
3000.00	3030.00	6.74	28.34	24.21	3.53	1.62
3100.00	3130.00	6.80	29.07	23.03	3.88	1.83
3200.00	3230.00	6.80	28.43	21.62	3.85	2.01
3300.00	3330.00	6.81	27.62	22.07	3.63	2.12
3400.00	3430.00	6.53	27.00	21.28	3.23	2.19
3500.00	3530.00	6.35	24.71	20.83	2.77	2.20

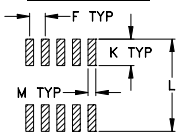
### Electrical Schematic



### Outline Drawing



### PCB Land Pattern



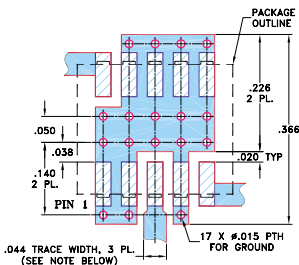
Suggested Layout.  
Tolerance to be within ±.002

### Outline Dimensions (inch/mm)

A	B	C	D	E	F	G
.30	.250	.190	.266	.050	.050	.012
7.62	6.35	4.83	6.76	1.27	1.27	0.30
H	J	K	L	M		wt
.029	.004	.085	.296	.030		grams
0.74	0.10	2.16	7.52	0.76		0.5

### Demo Board MCL P/N: TB-144

### Suggested PCB Layout (PL-045)



- NOTES: 1. TRACE WIDTH IS SHOWN FOR ROGERS RO4350B WITH DIELECTRIC THICKNESS .020" ± .0015"; COPPER: 1/2 OZ. EACH SIDE. FOR OTHER MATERIALS TRACE WIDTH MAY NEED TO BE MODIFIED.  
2. BOTTOM SIDE OF THE PCB IS CONTINUOUS GROUND PLANE.

- DENOTES PCB COPPER LAYOUT WITH SMOBC (SOLDER MASK OVER BARE COPPER)
- DENOTES COPPER LAND PATTERN FREE OF SOLDER MASK

**Mini-Circuits®**  
ISO 9001 ISO 14001 CERTIFIED

ALL NEW  
minicircuits.com

P.O. Box 350166, Brooklyn, New York 11235-0003 (718) 934-4500 Fax (718) 332-4661 For detailed performance specs & shopping online see Mini-Circuits web site



The Design Engineers Search Engine Provides ACTUAL Data Instantly From MINI-CIRCUITS At: [www.minicircuits.com](http://www.minicircuits.com)

RF/IF MICROWAVE COMPONENTS

REV. G  
M108294  
ED-9595B/1  
MCA-35MH+  
DJ/TD/CP/AM  
080305  
Page 1 of 2

# Performance Charts

# MCA-35MH+

