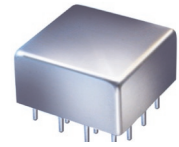


# Plug-In I&Q Demodulator

## MIQY-140D

50Ω

137 to 143 MHz



CASE STYLE: C07  
PRICE: \$22.20 ea. QTY (1-49)

### Maximum Ratings

Operating Temperature	-55°C to 100°C
Storage Temperature	-55°C to 100°C
LO/RF Power	50mW
I&Q Current	40mA

Permanent damage may occur if any of these limits are exceeded.

### Pin Connections

LO (carrier)	13
RF (signal)	1
I (0°)(ref.)	8
Q (90°)*	5
ISOLATE**	10,11
GROUND	2,3,4,6,7,9,12,14,15,16

\* Q= I +90° for LO<RF

Q= I -90° for LO>RF

\*\*external variable capacitors can be connected at pins 10&11 to ground for improvement of phase unbalance.

### Features

- good amplitude and phase unbalance
- excellent 3rd and 5th harmonic suppression

### Applications

- radar
- communication systems

### Demodulator Electrical Specifications

MODEL NO.	FREQUENCY (MHz)				CONVERSION LOSS (dB)			AMPLITUDE UNBALANCE (dB)		PHASE UNBALANCE (Deg.)		HARMONIC SUPPRESSION (dBc)			
	RF (SIGNAL)	LO (CARRIER)	I&Q		$\bar{x}$	$\sigma$	Max.	Typ.	Max.	with reference to 90°		3XI/Q	5XI/Q		
	$f_L$	$f_U$	Min.	Max.						Typ. Max.	Typ. Min.	Typ. Min.	Typ. Max.		
MIQY-140D	137	143	DC	5	5.5	0.25	7.0	0.10	0.6	0.5	3.0	47	35	70	50

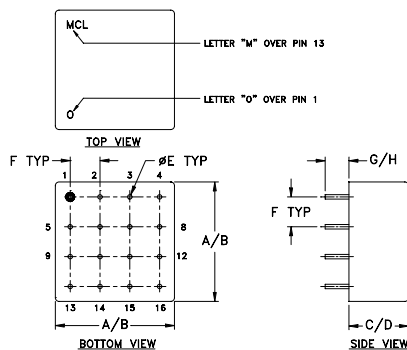
Note:

1. Operating LO Power: 10±0.5 dBm
2. 1 dB Compression at +4 dBm RF input
3. DC offset 1mV typ.
4. Conversion Loss=RF power, dBm - (I+Q) power, dBm

### Typical Performance Data

Frequency (MHz)	Conversion Loss (dB)	Amplitude Unbalance (dB)	Phase (I&Q) (deg.)	Frequency (MHz)		DC Offset (mV)
				LO	RF	
140.10	0.30	5.52	0.05	137.00	137.10	-0.08
140.48	0.66	5.50	0.05	137.46	137.56	-0.16
140.85	1.03	5.49	0.06	137.92	138.02	-0.06
140.98	1.15	5.49	0.10	138.08	138.18	-0.13
141.23	1.38	5.49	0.08	138.39	138.49	-0.13
141.61	1.75	5.50	0.06	138.85	138.95	-0.19
141.86	1.99	5.50	0.04	139.15	139.25	-0.14
141.99	2.11	5.50	0.06	139.31	139.41	-0.08
142.36	2.47	5.50	0.10	139.77	139.87	-0.07
142.74	2.83	5.50	0.11	140.23	140.33	-0.07
142.86	2.96	5.51	0.07	140.39	140.49	-0.11
143.12	3.19	5.51	0.08	140.69	140.79	-0.18
143.49	3.56	5.51	0.12	141.15	141.25	-0.17
143.74	3.79	5.51	0.08	141.46	141.56	-0.14
143.87	3.92	5.51	0.13	141.62	141.72	-0.19

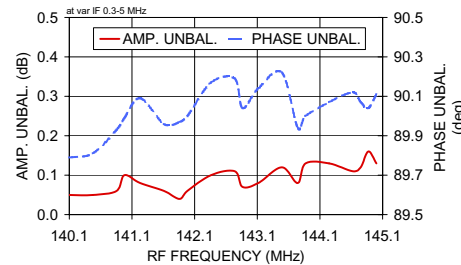
### Outline Drawing



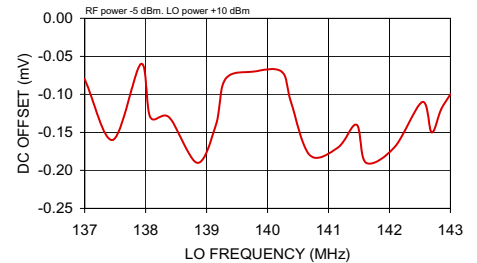
### Outline Dimensions (inch/mm)

A	B	C	D	E	F	G	H	wt
.770	.810	.380	.410	.030	.200	.20	.14	grams
19.56	20.57	9.65	10.41	0.76	5.08	5.08	3.56	11.0

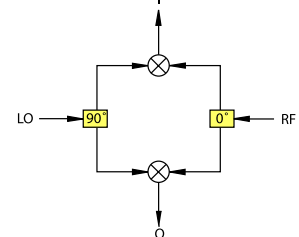
MIQY-140D AMPLITUDE & PHASE UNBALANCE



MIQY-140D DC OFFSET



### I&Q demodulation block diagram



**Mini-Circuits**  
ISO 9001 ISO 14001 AS 9100 CERTIFIED

[minicircuits.com](http://minicircuits.com)

P.O. Box 350166, Brooklyn, New York 11235-0003 (718) 934-4500 Fax (718) 332-4661 For detailed performance specs & shopping online see Mini-Circuits web site



The Design Engineers Search Engine Provides ACTUAL Data Instantly From MINI-CIRCUITS At: [www.minicircuits.com](http://www.minicircuits.com)

IF/RF MICROWAVE COMPONENTS

REV. OR  
M97747  
MIQY-140D  
DJ/VV/CP  
070605