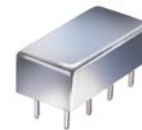


Plug-In

Voltage Controlled Oscillator

POS-1025+

Linear Tuning 685 to 1025 MHz



CASE STYLE: A06
PRICE: \$16.95 ea. QTY (5-49)

Features

- octave bandwidth range
- low phase noise, -124 dBc/Hz at 1 MHz offset, typ.
- hermetically sealed

Applications

- cellular up and down converters
- wideband frequency synthesizers
- signal generators

+ RoHS compliant in accordance with EU Directive (2002/95/EC)

The +Suffix has been added in order to identify RoHS Compliance. See our web site for RoHS Compliance methodologies and qualifications.

Electrical Specifications

FREQUENCY (MHz)		POWER OUTPUT (dBm)	TUNING VOLTAGE (V)		PHASE NOISE (dBc/Hz) SSB at offset frequencies: Typ.				PULLING pk-pk @ 12 dB (MHz)	PUSHING (MHz/V)	TUNING SENSITIVITY (MHz/V)	HARMONICS (dBc)		3 dB MODULATION BANDWIDTH (MHz)	DC OPERATING POWER	
Min.	Max.	Typ.	Min.	Max.	1 kHz	10 kHz	100 kHz	1 MHz	Typ.	Typ.	Typ.	Typ.	Max.	Typ.	Vcc (volts)	Current (mA) Max.
685	1025	+9.0	1	16	-65	-84	-104	-124	5.0	0.6	21-36	-23	-18	0.1	12	22

Pin Connections

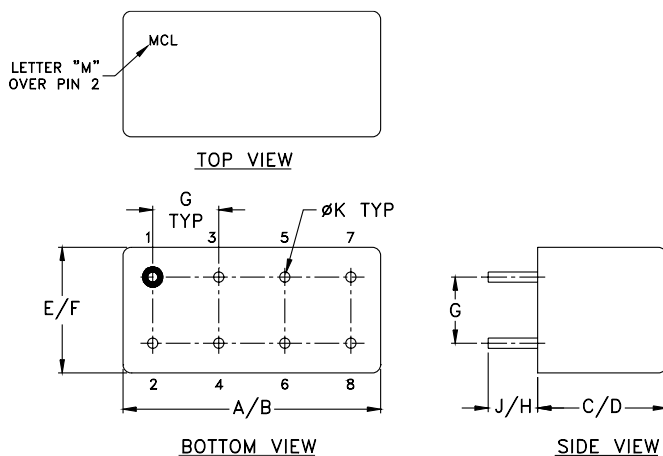
RF OUT	2
VCC	1
V-TUNE	8
GROUND	3,4,5,6,7
CASE GROUND	3,4,5,6,7

Maximum Ratings

Operating Temperature	-55°C to 85°C
Storage Temperature	-55°C to 100°C
Absolute Max. Supply Voltage (Vcc)	+16V
Absolute Max. Tuning Voltage (Vtune)	+18V

all specifications: 50 ohm system

Outline Drawing



Outline Dimensions (inch/mm)

A	B	C	D	E	F	G	H	J	K	wt
.770	.800	.285	.310	.370	.400	.200	.20	.14	.031	grams
19.558	20.32	7.239	7.874	9.398	10.16	5.08	5.08	3.556	0.7874	5.2



P.O. Box 350166, Brooklyn, New York 11235-0003 (718) 934-4500 Fax (718) 332-4661 For detailed performance specs & shopping online see Mini-Circuits web site



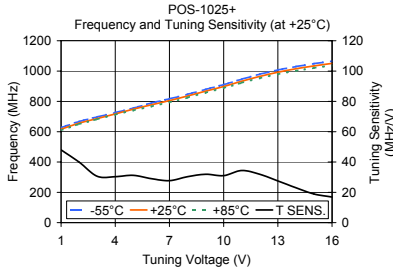
The Design Engineers Search Engine Provides ACTUAL Data Instantly From MINI-CIRCUITS At: www.minicircuits.com

RF/IF MICROWAVE COMPONENTS

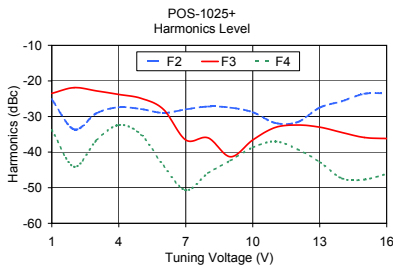
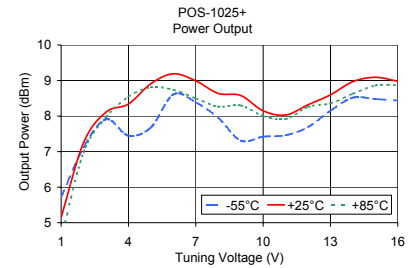
REV. J
M113397
POS-1025+
FL/TD/CP/AM
070907
Page 1 of 2

Performance Data & Curves

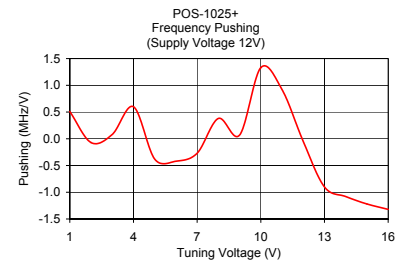
POS-1025+



V TUNE	TUNING SENS. (MHz/V)	FREQUENCY (MHz)			POWER OUTPUT (dBm)		
		-55°C	+25°C	+85°C	-55°C	+25°C	+85°C
1.00	48.00	626.90	616.50	609.08	5.72	5.15	4.56
2.00	39.90	667.15	656.40	649.63	7.12	7.25	6.98
3.00	30.60	697.26	686.95	681.65	7.91	8.11	7.97
4.00	30.30	725.92	717.23	711.85	7.45	8.34	8.55
5.00	31.20	755.70	748.42	739.97	7.68	8.91	8.81
6.00	29.00	788.73	777.42	766.42	8.61	9.19	8.74
7.00	27.70	816.86	805.13	793.90	8.39	8.99	8.50
8.00	30.30	846.70	835.47	824.70	7.95	8.64	8.27
9.00	31.90	878.96	867.33	856.78	7.31	8.58	8.30
10.00	31.00	910.30	898.35	888.22	7.42	8.15	8.00
11.00	34.40	946.17	932.78	922.00	7.46	8.03	7.92
12.00	31.90	979.23	964.68	952.73	7.69	8.32	8.26
13.00	27.50	1007.05	992.13	978.85	8.15	8.60	8.36
14.00	23.00	1029.60	1015.10	1001.43	8.52	8.97	8.63
15.00	18.90	1048.83	1034.03	1020.18	8.48	9.09	8.86
16.00	16.90	1065.93	1050.93	1036.63	8.44	8.98	8.87



V TUNE	HARMONICS (dBc)			FREQ. PUSHING (MHz/V)
	F2	F3	F4	
1.00	-25.20	-23.50	-33.80	0.51
2.00	-33.60	-21.90	-44.10	-0.07
3.00	-29.10	-22.80	-36.70	0.08
4.00	-27.40	-23.80	-32.40	0.60
5.00	-27.90	-24.90	-35.10	-0.38
6.00	-29.00	-28.00	-43.80	-0.42
7.00	-28.00	-36.60	-50.70	-0.27
8.00	-27.20	-36.00	-45.90	0.38
9.00	-27.50	-41.30	-42.40	0.07
10.00	-28.80	-36.60	-38.70	1.33
11.00	-31.80	-33.10	-37.00	0.92
12.00	-31.60	-32.40	-39.20	-0.05
13.00	-27.50	-33.00	-42.80	-0.90
14.00	-25.70	-34.50	-47.40	-1.08
15.00	-23.60	-35.90	-47.70	-1.22
16.00	-23.50	-36.20	-46.10	-1.32



P.O. Box 350166, Brooklyn, New York 11235-0003 (718) 934-4500 Fax (718) 332-4661 For detailed performance specs & shopping online see Mini-Circuits web site



The Design Engineers Search Engine Provides ACTUAL Data Instantly From MINI-CIRCUITS At: www.minicircuits.com

RF/IF MICROWAVE COMPONENTS