

Surface Mount Low Pass Filter

SALF-800+ SALF-800

50Ω DC to 800 MHz

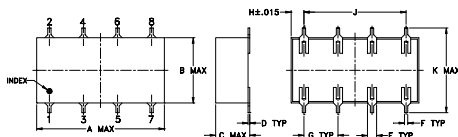
Maximum Ratings

Operating Temperature	-40°C to 85°C
Storage Temperature	-55°C to 100°C
Power Input	0.5W max.

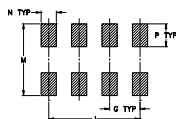
Pin Connections

INPUT	1
OUTPUT	8
GROUND	2,3,4,5,6,7

Outline Drawing



PCB Land Pattern

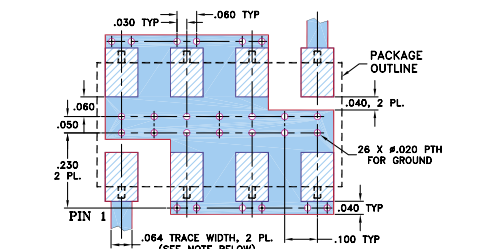


Suggested Layout,
Tolerance to be within ±.002

Outline Dimensions (inch/mm)

A	B	C	D	E	F	G
.75	.38	.20	.010	.050	.020	.200
19.05	9.65	5.08	0.25	1.27	0.51	5.08
H	J	K	M	N	P	wt
.075	.600	.450	.100	.150	.150	grams
1.91	15.24	11.43	11.94	2.54	3.81	1.6

Demo Board MCL P/N: TB-187+
Suggested PCB Layout (PL-049)



NOTES: 1. TRACE WIDTH IS SHOWN FOR ROGERS RO4350B WITH DIELECTRIC THICKNESS .030" ± .002"; COPPER: 1/2 OZ. EACH SIDE. FOR OTHER MATERIALS TRACE WIDTH MAY NEED TO BE MODIFIED.
2. BOTTOM SIDE OF THE PCB IS CONTINUOUS GROUND PLANE.

■ DENOTES PCB COPPER LAYOUT WITH SMOBC (SOLDER MASK OVER BARE COPPER)
■ DENOTES COPPER LAND PATTERN FREE OF SOLDER MASK

Features

- 7-section elliptic function
- excellent rejection

Applications

- defense communications
- receivers/transmitters
- harmonic rejection of VCOs



CASE STYLE: YY101
PRICE: \$6.95 ea. QTY (1-9)

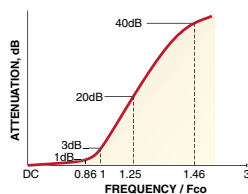
+ RoHS compliant in accordance with EU Directive (2002/95/EC)

The +Suffix identifies RoHS Compliance. See our web site for RoHS Compliance methodologies and qualifications.

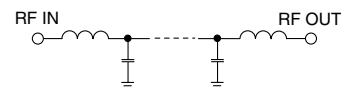
Low Pass Filter Electrical Specifications

PASSBAND (MHz)	f _{co} , (MHz) Nom.	STOPBAND (MHz)		VSWR (:1)	
	(loss < 3 dB) Typ.	(loss > 20 dB) Min.	(loss > 35 dB) Min.	Pass band typ.	Stop band typ.
DC-800	935	1200-1300	1330-2550	1.6	18

typical frequency response

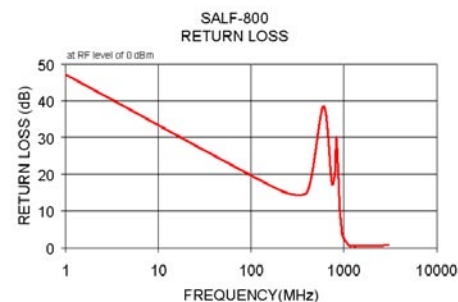
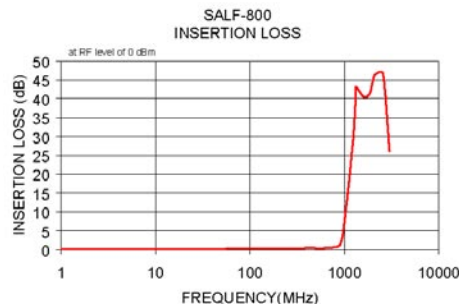


Electrical Schematic



Typical Performance Data

Frequency (MHz)	Insertion Loss (dB)		Return Loss (dB)
	\bar{x}	σ	
1.00	0.04	0.00	47.13
200.00	0.27	0.00	15.74
400.00	0.39	0.01	15.12
600.00	0.37	0.01	38.43
740.00	0.55	0.01	17.54
800.00	0.63	0.01	20.34
830.00	0.65	0.02	29.56
900.00	1.35	0.12	10.94
935.00	2.59	0.21	5.93
970.00	4.51	0.33	3.16
1125.00	18.55	0.47	0.60
1200.00	26.00	0.55	0.41
1250.00	30.75	0.68	0.52
1315.00	40.35	1.18	0.41
1330.00	43.09	1.48	0.49
1600.00	40.51	0.28	0.45
1850.00	41.36	0.22	0.46
2100.00	46.38	0.40	0.46
2550.00	46.79	1.09	0.51
3000.00	26.11	0.22	0.71



Mini-Circuits®
ISO 9001 ISO 14001 CERTIFIED

ALL NEW
minicircuits.com

P.O. Box 350166, Brooklyn, New York 11235-0003 (718) 934-4500 Fax (718) 332-4661 For detailed performance specs & shopping online see Mini-Circuits web site



The Design Engineers Search Engine Provides ACTUAL Data Instantly From MINI-CIRCUITS At: www.minicircuits.com

RF/IF MICROWAVE COMPONENTS

REV. C
M111708
SALF-800
070716