

Ultra-Small Ceramic Power Splitter/Combiner

SCN-3-28+ SCN-3-28

3 Way-0° 50Ω 1600 to 2800 MHz



CASE STYLE: FV1206-1
PRICE: \$3.95 ea. QTY. (10-49)
\$3.60 ea. QTY. (100)

+ RoHS compliant in accordance with EU Directive (2002/95/EC)

The +Suffix identifies RoHS Compliance. See our web site for RoHS Compliance methodologies and qualifications.

Maximum Ratings

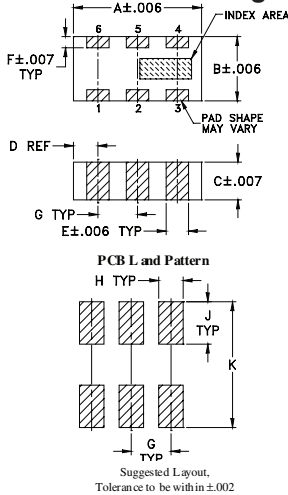
Operating Temperature	-55°C to 100°C
Storage Temperature	-55°C to 100°C
Power Input (as a splitter)	15W* max.

* Derate linearly to 6W at 100°C ambient.

Pin Connections

SUM PORT	2
PORT 1	6
PORT 2	5
PORT 3	4
GROUND	1,3
PORT 1-2, 2-3	resistor external 124 OHMS
PORT 1-3	resistor external 127 OHMS

Outline Drawing

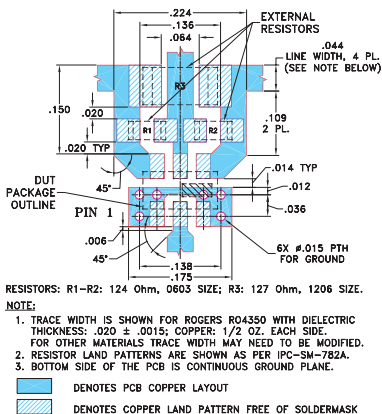


Outline Dimensions (inch/mm)

A	B	C	D	E	F
.126	.063	.035	.024	.022	.011
3.20	1.60	0.89	0.61	0.56	0.28

G	H	J	K	wt
.039	.024	.042	.123	grams
0.99	0.61	1.07	3.12	.020

Demo Board MCL P/N: TB-303 Suggested PCB Layout (PL-171)



Features

- isolation resistors, external
- low insertion loss, 0.8 dB typ.
- excellent amplitude unbalance, 0.2 dB typ.
- very good phase unbalance, 5 deg. typ.
- high isolation, 12 dB typ.
- excellent power handling, 15W as splitter
- small size, 0.12"X0.06"X0.035"
- ESD non-sensitive
- temperature stable LTCC technology
- wrap around, terminations for excellent solderability
- low cost

Applications

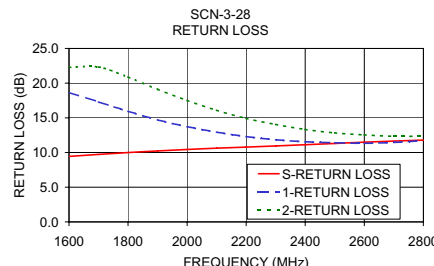
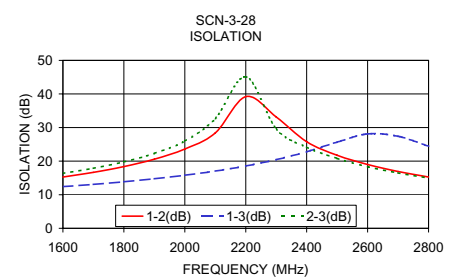
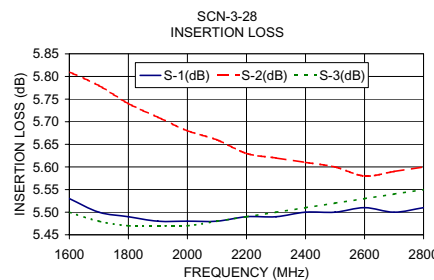
- PSC, DECT
- DSS
- WLAN
- satellite communication
- line of sight communication
- ISM applications
- WLL
- defense applications

Electrical Specifications

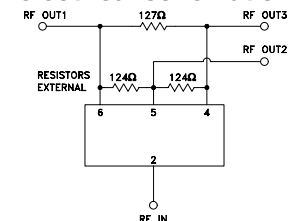
FREQ. RANGE (MHz)	ISOLATION (dB)		INSERTION LOSS (dB) ABOVE 4.8		PHASE UNBALANCE (Degrees)		AMPLITUDE UNBALANCE (dB)		RETURN LOSS (dB)	
	Typ.	Min.	Typ.	Max.	Typ.	Max.	Typ.	Max.	INPUT Typ.	OUTPUT Typ.
1600-2800	12	10	0.8	1.2	5	8	0.2	0.6	10	12
1800-2000	14	12	0.8	1.2	5	8	0.2	0.6	10	13
2000-2200	16	13	0.8	1.2	5	8	0.2	0.5	11	12
2400-2500	20	17	0.8	1.2	5	8	0.2	0.5	11	12

Typical Performance Data

Freq. (MHz)	Insertion Loss (dB)			Amp. Unbal. (dB)	Isolation (dB)			Phase Unbal. (deg.)	Return Loss (dB)		
	S-1	S-2	S-3		1-2	1-3	2-3		S	1	2
1600.00	5.53	5.81	5.50	0.31	15.27	12.43	16.36	3.29	9.44	18.66	22.27
1700.00	5.50	5.78	5.48	0.29	16.66	13.09	17.87	3.64	9.73	17.30	22.33
1800.00	5.49	5.74	5.47	0.27	18.38	13.86	19.78	3.99	9.99	15.95	20.89
1900.00	5.48	5.71	5.47	0.24	20.57	14.75	22.29	4.31	10.23	14.71	19.12
2000.00	5.48	5.68	5.47	0.21	23.60	15.80	25.98	4.62	10.44	13.73	17.52
2100.00	5.48	5.66	5.48	0.18	28.40	17.05	32.67	4.79	10.63	12.94	16.11
2200.00	5.49	5.63	5.49	0.15	39.20	18.57	45.10	4.99	10.78	12.30	14.93
2300.00	5.49	5.62	5.50	0.12	33.16	20.43	29.60	5.06	10.95	11.85	14.05
2400.00	5.50	5.61	5.51	0.11	25.77	22.80	24.16	5.14	11.12	11.56	13.33
2500.00	5.50	5.60	5.52	0.09	21.75	25.66	20.80	5.14	11.30	11.41	12.83
2600.00	5.51	5.58	5.53	0.08	18.99	28.11	18.37	5.02	11.49	11.33	12.54
2700.00	5.50	5.59	5.54	0.08	16.91	27.40	16.50	4.88	11.65	11.46	12.34
2800.00	5.51	5.60	5.55	0.09	15.25	24.44	14.98	4.68	11.79	11.72	12.35



electrical schematic



Mini-Circuits®
ISO 9001 ISO 14001 AS 9100 CERTIFIED

minicircuits.com

P.O. Box 350166, Brooklyn, New York 11235-0003 (718) 934-4500 Fax (718) 332-4661 For detailed performance specs & shopping online see Mini-Circuits web site



The Design Engineers Search Engine Provides ACTUAL Data Instantly From MINI-CIRCUITS At: www.minicircuits.com

IF/RF MICROWAVE COMPONENTS

REV. B
M102713
ED-11736/5
SCN-3-28
AD/DJ/CP/AM
090123