

Low Pass Filter

SXLP-44+

50Ω DC to 44 MHz

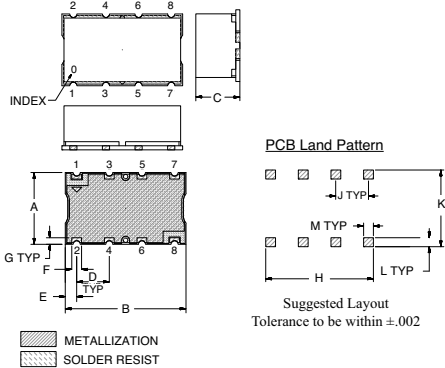
Maximum Ratings

Operating Temperature	-40°C to 85°C
Storage Temperature	-55°C to 100°C
RF Power Input	0.5W Max.

Pin Connections

INPUT	1
OUTPUT	8
GROUND	2, 3, 4, 5, 6, 7

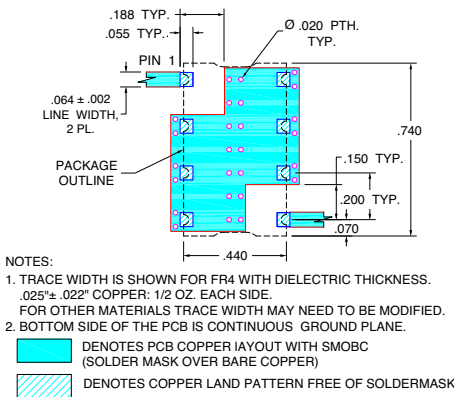
Outline Drawing



Outline Dimensions (inch mm)

A	B	C	D	E	F	
.440	.740	.270	.200	0.70	0.60	
11.18	18.80	6.86	5.08	1.78	1.52	
G	H	J	K	L	M	wt.
.040	.660	.200	.470	.055	.060	grams
1.02	16.76	5.08	11.94	1.40	1.52	3.0

Demo Board MCL P/N: TB-368 Suggested PCB Layout (PL-230)

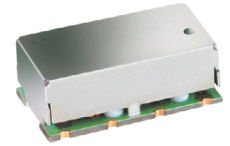


Features

- High rejection
- Sharp cut-off
- Shielded package
- Aqueous washable
- Low cost

Applications

- Defense communications
- Receivers / Transmitters
- Harmonic rejection



CASE STYLE: HF1139
PRICE: \$ 8.95 ea. QTY (1-9)

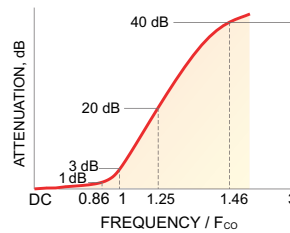
+ RoHS compliant in accordance with EU Directive (2002/95/EC)

The +Suffix has been added in order to identify RoHS Compliance. See our web site for RoHS Compliance methodologies and qualifications.

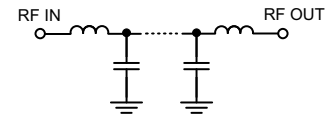
Low Pass Filter Electrical Specifications (T_{AMB} = 25°C)

PASSBAND (MHz)	f _{co} , MHz Nom.	STOPBAND (MHz)		VSWR (:1)	
		(Loss > 20dB)	(Loss > 40dB)	Passband Typ.	Stopband Typ.
DC - 44	48.5	59 - 65.5	65.5 - 600	1.4	18

Typical Frequency Response

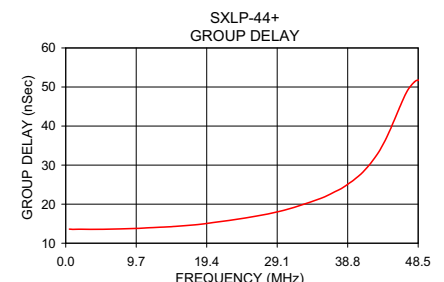
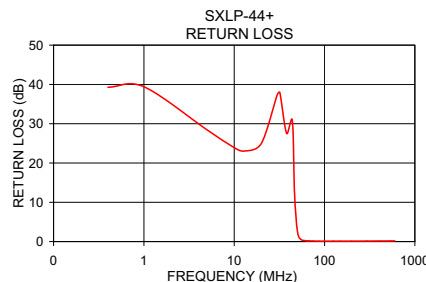
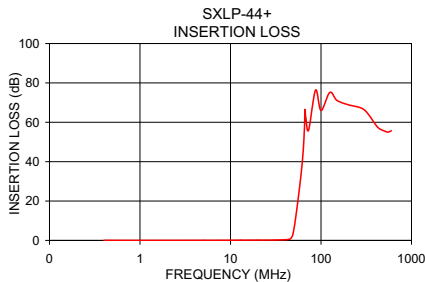


Functional Schematic



Typical Performance Data at 25°C

Frequency (MHz)	Insertion Loss (dB)		Return Loss (dB)	Frequency (MHz)	Group Delay (nSec)
	\bar{x}	σ			
0.5	0.01	0.00	39.49	0.5	13.62
3.0	0.02	0.00	31.76	2.0	13.58
6.0	0.04	0.00	26.26	10.0	13.81
11.0	0.08	0.00	22.64	11.0	13.91
28.0	0.16	0.00	33.83	12.0	14.00
39.0	0.33	0.01	27.35	13.0	14.11
44.0	0.50	0.01	25.73	14.0	14.18
46.8	1.19	0.07	9.72	15.0	14.30
48.5	2.84	0.14	4.73	18.0	14.76
49.0	3.61	0.15	3.75	20.0	15.22
52.0	10.59	0.22	1.00	30.0	18.41
56.0	21.73	0.28	0.37	35.0	21.42
59.0	30.40	0.37	0.27	37.0	23.16
65.5	58.16	2.32	0.18	38.0	24.08
80.0	62.80	0.88	0.13	40.0	26.76
100.0	66.21	0.27	0.11	42.0	30.55
200.0	68.63	0.84	0.11	43.5	34.75
300.0	66.02	1.31	0.13	44.0	36.49
400.0	58.70	0.68	0.14	46.0	45.02
600.0	55.94	0.48	0.17	48.5	51.73



P.O. Box 350166, Brooklyn, New York 11235-0003 (718) 934-4500 Fax (718) 332-4661 For detailed performance specs & shopping online see Mini-Circuits web site



The Design Engine Search Engine Provides ACTUAL Data Instantly From MINI-CIRCUITS At: www.minicircuits.com

RF/IF MICROWAVE COMPONENTS

REV. OR
M112220
EDR-7480/1U
SXLP-44+
URJ/RAV
071023
page 1 of 1